



60MM



PIÉTIONNIER

PROMA 3XL

DIMENSIONS

(A)



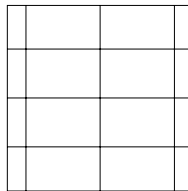
PROMA 3XL

2 3/8" x 32" x 48"

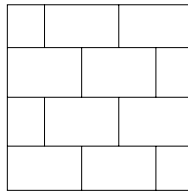
60mm x 812mm x 1219mm

INSTALLATIONS

*Inspirations seulement



LINÉAIRE



LINÉAIRE

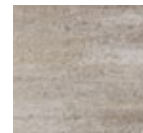
COULEURS

STANDARD

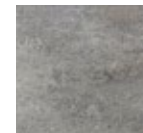


**CHARBON
CENDRÉ**

PREMIUM



BEIGE OKA



GRIS CIEL



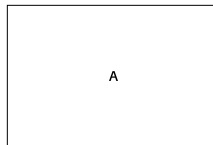
TRUFFE

*COMMANDE SPÉCIALE

POIDS

3050 lbs

PALETTE



SPECIFICATIONS

10 rangs

10.66 pi² par rang

106.6 pi² par palette

40 pi lin. par palette

PRESTIGE*



BRUME