



PRODUIT VERSATILE TOUT-EN-UN !

60MM



VÉHICULAIRE



PIÉTIONNIER

# ASPEN FLEX

## DIMENSIONS

HAUTEUR x LARGEUR x LONGUEUR

(A)



**ASPEN FLEX**

2 3/8" x 5 7/8" x 11 3/4"

60mm x 149mm x 299mm

(B)



2 3/8" x 11 3/4" x 11 3/4"

60mm x 299mm x 299mm

(C)



2 3/8" x 11 3/4" x 17 11/16"

60mm x 299mm x 449mm

## POIDS

3310 lbs

## SPECIFICATIONS

10 rangs

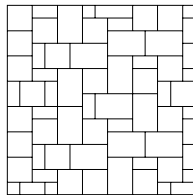
11.54 pi<sup>2</sup> par rang

115.4 pi<sup>2</sup> par palette

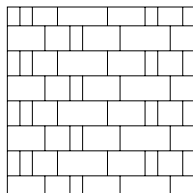
118.04 pi lin. par palette

## INSTALLATIONS

\*Inspirations seulement



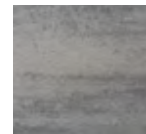
MODULAIRE



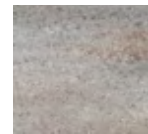
LINÉAIRE

## COULEURS

STANDARD

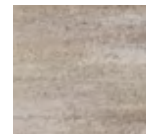


**CHARBON  
CENDRÉ**



**CANYON**

PREMIUM



**BEIGE OKA**



**CAVIAR**

## PALETTE

B	B	B	B
A	A	A	A
C	C	C	C