



60MM



PIÉTIONNIER

PROMA QUADRA

DIMENSIONS

(A)



PROMA QUADRA

2 3/8" x 32" x 32"

60mm x 812mm x 812mm

POIDS

2440 lbs

SPECIFICATIONS

12 rangs

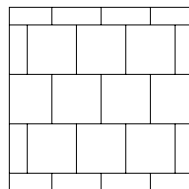
7.1 pi² par rang

85.2 pi² par palette

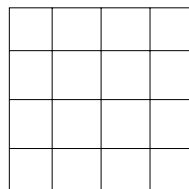
32 pi lin. par palette

INSTALLATIONS

*Inspirations seulement

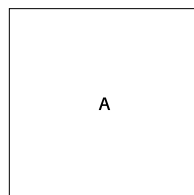


LINÉAIRE



DAMIER

PALETTE



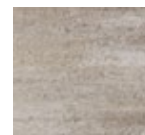
COULEURS

STANDARD

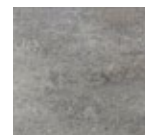


**CHARBON
CENDRÉ**

PREMIUM



BEIGE OKA



GRIS CIEL



TRUFFE

*COMMANDE SPÉCIALE

PRESTIGE*



BRUME